

PACE VISKOSITÄTSÜBERSICHT

| | | | | | | |
|--------|--|--|--|--|--|--------------------------|
| 0W-20 | pace EVO PRIME FE API SP RC BMW LL 17FE+ MB-Freigabe 229.71, 229.72 ACEA C5, C6 API SN Plus RC ILSAC GF-6A Opel OV0401547 BMW LL 14FE+ Chrysler MS-12145 Fiat 9.55535-GSX FORD WSS-M2C947-B1 FORD WSS-M2C962-A1 JLR STJLR 03-5006-16 Volvo VCC RBS0-2AE | pace EVO FE VW 508 00 VW 509 00 Porsche C20 ACEA A1/B1-12 API SN | pace EVO EUR ACEA C5 API SN MB 229.71 STJLR.51.5122 | pace EVO US API SP ILSAC GF-6A Dexos 1 Gen 2 API SN API SN Plus RC Ford WSS-M2C947-A Ford WSS-M2C962-A1 | pace EVO C5 API SN ACEA C5-16 | pace SN API SN |
| | pace EVO EUR ACEA A1/B1-12 ACEA C5-16 API SN Ford WSS M2C948-A Ford WSS M2C948-B STJLR.03.5004 | pace EVO US API SP ILSAC GF-6A Dexos 1 Gen 2 API SN API SN Plus RC ILSAC GF-5 Ford WSS-M2C960-A1 Ford WSS-M2C945-A | pace SN API SN | | | |
| 5W-30 | pace EVO PRIME GER MB-Freigabe 229.6 ACEA A5/B5-16 ACEA A1/B1-12 API SL | pace EVO FE API SP BMW LL 04 MB-Freigabe 229.52 MB-Freigabe 229.51 MB-Freigabe 229.31 Porsche C30 VW 504 00 VW 507 00 ACEA C3 API SN Plus | pace EVO EUR ACEA A5/B5-16 ACEA A1/B1-12 API SL Ford WSS M2C913-C Ford WSS M2C913-D Renault RN 0700 VW 504 00 STJLR.03.5003 | pace EVO US API SP Dexos 1 Gen 2 ILSAC GF-6A API SN API SN Plus RC Ford WSS-M2C961-A1 Ford WSS-M2C946-A ILSAC GF-5 | pace EVO C1 ACEA C1-16 Mazda STJLR.03.5005 | |
| | pace EVO C2/C3 API SN MB-Freigabe 229.52 MB-Freigabe 229.51 ACEA C2/C3-16 MB 229.31 PSA B71 2290 (2014) | pace EVO C3 API SN BMW LL 04 MB-Freigabe 229.51 MB-Freigabe 229.52 VW 505 00 VW 505 01 ACEA C3-16 Dexos 2 MB 229.31 | pace EVO C4 MB-Freigabe 226.51 Renault RN 0720 ACEA C4-16 | pace GER API SL MB-Freigabe 229.3 ACEA A3/B4-16 ACEA A3/B3-16 Renault RN 0700 Renault RN 0710 VW 502 00 VW 505 00 MB 226.5 | pace SN API SN | |
| 5W-40 | pace EVO GER API SN BMW LL 01 MB-Freigabe 229.5 ACEA A3/B4-16 Fiat 9.55535-M2 MB 226.5 Opel GM-LL-B-025 Porsche A40 PSA B71 2296 (2014) Renault RN 0700 Renault RN 0710 VW 502 00 VW 505 00 | pace EVO PD MB-Freigabe 229.31 MB-Freigabe 229.51 VW 505 00 VW 505 01 ACEA C3 API SN | pace EVO C3 API SN MB-Freigabe 229.51 ACEA C3-16 Dexos 2 MB 229.31 | pace GER API SN MB-Freigabe 229.3 Porsche A40 Renault RN 0700 Renault RN 0710 VW 502 00 VW 505 00 ACEA A3/B3-16 ACEA A3/B4-16 Fiat 9.55535-M2 GM-LL-025-A GM-LL-025-B MB 226.5 | pace SN API SN | |
| | pace GER FS API SN MB-Freigabe 229.1 ACEA A3/B4-16 Renault RN 0700 VW 501 01 VW 505 00 | pace GER API SN MB-Freigabe 229.3 ACEA A3/B3-16 ACEA A3/B4-16 Renault RN 0700 Renault RN 0710 VW 505 00 VW 501 01 PSA B71 2300 (2014) | pace CLASSIC SF/CD API SF/CD | pace SN API SN | pace CLASSIC SJ/CF API SJ/CF | |
| 15W-40 | pace GER FS API SL MB-Freigabe 229.1 MAN M 3275-1 MB 226.3 (V2012.1) MTU Type 2 Volvo VDS | pace CLASSIC SF/CD API SF/CD | | | | |

PREISLISTE WERKSVERKAUF

2022

www.avista-lubes.de

AVISTA

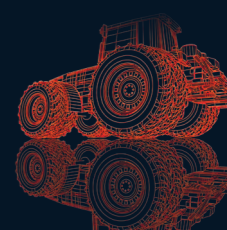
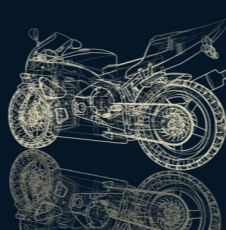
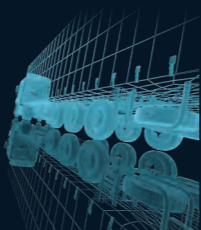
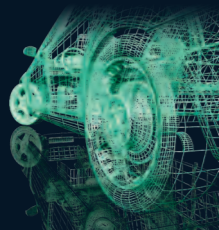
Advanced lubricants made in Germany.

Mo. - Do.: 10:00 - 12:30 & 13:00 - 15:00 Uhr

AVISTA OIL Deutschland GmbH, Bahnhofstraße 82, 31311 Uetze-Dollbergen, 05177 85-128

Freigaben
Spezifikationen
Empfehlungen

Jetzt auch online unter shop.avista-lubes.de



Produktname Viskosität Anwendung 1 Liter 5 Liter 20 Liter

Motorenöle für Personenkraftwagen

| | | | | | |
|--------------------|--------|-----|--------|----------|---------|
| pace EVO PRIME FE | 0W-20 | PKW | 9,00 € | 39,00 € | - |
| pace EVO PRIME GER | 5W-30 | PKW | 6,00 € | 26,00 € | - |
| pace EVO FE | 5W-30 | PKW | 6,00 € | 28,00 € | - |
| pace EVO FE | 0W-20 | PKW | 7,00 € | 30,00 € | - |
| pace EVO GER | 0W-40 | PKW | 8,00 € | 35,00 € | - |
| pace EVO GER | 5W-40 | PKW | 6,00 € | 28,00 € | - |
| pace EVO C1 | 5W-30 | PKW | 5,50 € | *23,00 € | - |
| pace EVO C2/C3 | 5W-30 | PKW | 7,00 € | 30,00 € | - |
| pace EVO C3 | 5W-30 | PKW | 7,00 € | 30,00 € | - |
| pace EVO C4 | 5W-30 | PKW | 7,00 € | 30,00 € | - |
| pace EVO PD | 5W-40 | PKW | 6,00 € | 28,00 € | - |
| pace EVO EUR | 5W-20 | PKW | 6,00 € | 26,00 € | - |
| pace EVO EUR | 5W-30 | PKW | 6,00 € | 28,00 € | - |
| pace EVO US | 5W-30 | PKW | 6,00 € | 26,00 € | - |
| pace GER FS | 10W-40 | PKW | 4,00 € | 19,00 € | 69,00 € |
| pace GER | 5W-40 | PKW | 5,00 € | 22,00 € | 77,00 € |
| pace CLASSIC SF/CD | SAE 30 | PKW | - | - | 59,00 € |
| pace CLASSIC SF/CD | 15W-40 | PKW | - | 15,00 € | - |
| pace CLASSIC SF/CD | 20W-50 | PKW | - | 16,00 € | 59,00 € |
| pace CLASSIC SA | SAE 30 | PKW | - | - | 59,00 € |
| pace CLASSIC SA | SAE 40 | PKW | - | - | 66,00 € |
| pace CLASSIC SA | SAE 50 | PKW | - | - | 80,00 € |

Motorenöle für Nutzfahrzeuge

| | | | | | |
|--------------------|--------|-----|--------|---------|----------|
| pure EVO PRIME SWE | 5W-30 | LKW | - | - | 105,00 € |
| pure EVO CI-4 TS | 15W-40 | LKW | 4,00 € | - | 69,00 € |
| pure EVO CI-4 TS | 10W-40 | LKW | - | - | 76,00 € |
| pure EVO E4 | 10W-40 | LKW | - | - | 79,00 € |
| pure EVO GER | 10W-40 | LKW | - | - | 78,00 € |
| pure CF-4 | 15W-40 | LKW | 4,00 € | 16,00 € | 62,00 € |
| pure CF-4 | 20W-50 | LKW | 4,00 € | 19,00 € | 69,00 € |

*4 Liter Gebinde

Produktname Viskosität Anwendung 1 Liter 5 Liter 20 Liter

Motorenöle für 2- und 4-Takter

| | | | | | |
|--------------------------|--------|----------|--------|---|---|
| pulse EVO Prime 2-Stroke | | 2-Takter | 5,00 € | - | - |
| pulse EVO 2-Stroke | | 2-Takter | 5,00 € | - | - |
| pulse EVO 4-Stroke | 10W-50 | 4-Takter | 6,00 € | - | - |
| pulse EVO 4-Stroke | 10W-40 | 4-Takter | 6,00 € | - | - |
| pulse 4-Stroke | 20W-50 | 4-Takter | 6,00 € | - | - |
| pulse 4-Stroke | 10W-40 | 4-Takter | 6,00 € | - | - |

Schmierstoffe für Getriebe

| | | | | | |
|------------------------|--------|----------|--------|---|----------|
| peer EVO PRIME GL4/GL5 | 80W-90 | Getriebe | 7,00 € | - | - |
| peer EVO PRIME ATF DCT | | Getriebe | 7,00 € | - | - |
| peer EVO PRIME ATF CVT | | Getriebe | 7,00 € | - | - |
| peer EVO PRIME ATF GER | | Getriebe | 6,00 € | - | - |
| peer EVO ATF 3000 | | Getriebe | 6,00 € | - | - |
| peer EVO ATF 2000 | | Getriebe | 4,00 € | - | - |
| peer ATF 1000 | | Getriebe | 4,00 € | - | - |
| peer EVO GL4 | 80W-90 | Getriebe | - | - | 100,00 € |
| peer CLASSIC GL3 | SAE 90 | Getriebe | - | - | 69,00 € |

Schmierstoffe für Landmaschinen

| | | | | | |
|-------------------|--------|---------------|--------|---|---------|
| path EVO PRIME E9 | 10W-40 | Landmaschinen | - | - | 98,00 € |
| path EVO UTTO | 10W-30 | Landmaschinen | - | - | 78,00 € |
| path EVO STOU | 10W-40 | Landmaschinen | - | - | 74,00 € |
| path EVO STOU | 10W-30 | Landmaschinen | - | - | 62,00 € |
| path STOU | 15W-30 | Landmaschinen | - | - | 59,00 € |
| path MOWER | | Rasenmäher | 4,00 € | - | - |

Sonstige Schmierstoffe

| | | | | | |
|-----------------|----|------------------------|--------|---------|---------|
| HYD HLP | 32 | Hydrauliköl | - | - | 50,00 € |
| HYD HLP | 46 | Hydrauliköl | - | 14,00 € | 53,00 € |
| HYD HLP | 68 | Hydrauliköl | - | 16,00 € | 58,00 € |
| TACKOIL SAW | | Sägekettenhaftöl | - | 12,00 € | - |
| ANTIFREEZE P11 | | Frostschutzmittel | 6,00 € | - | - |
| ANTIFREEZE P12+ | | Frostschutzmittel | 7,00 € | - | - |
| GREASE MZ, 400g | | Schmierfett, Kartusche | 3,00 € | - | - |